



# FIRELINX MANUAL

Firelinx Studio  
v1.0



(833) FIRELINX

[www.FIRELINX.COM](http://www.FIRELINX.COM)

(833) 347-3569

# IMPORTANT SAFEGUARDS

The following terms are used to identify safety and highlight the level of hazard throughout the manual.



**SAFETY ALERT SYMBOL** – Alerts potential personal injury hazards. Please obey all safety messages that follow this symbol to avoid possible injury or death.

**WARNING** – Indicates potentially hazardous situations, which, if not avoided, could result in serious injury or death.

**CAUTION** – Indicates potentially hazardous situations, which, if not avoided, may result in minor/moderate injury.

**NOTICE** – Important Information applicable to operation of the system and/or prevention of property damage.

Read all instructions and warnings carefully before operating units to ensure safe and appropriate use of this equipment.

**WARNING** – This product contains a lithium polymer battery. Please read the following cautions for proper handling and charging.



- This product may ignite under certain conditions
- Use a Lithium Polymer charger only
- Do not use Ni-Cd or Ni-MH charger – may cause fire
- Never exceed 1C (1xCapacity) charger rate
- Never leave batteries unattended while charging
- Do not short circuit
- May explode if damaged or disposed in fire

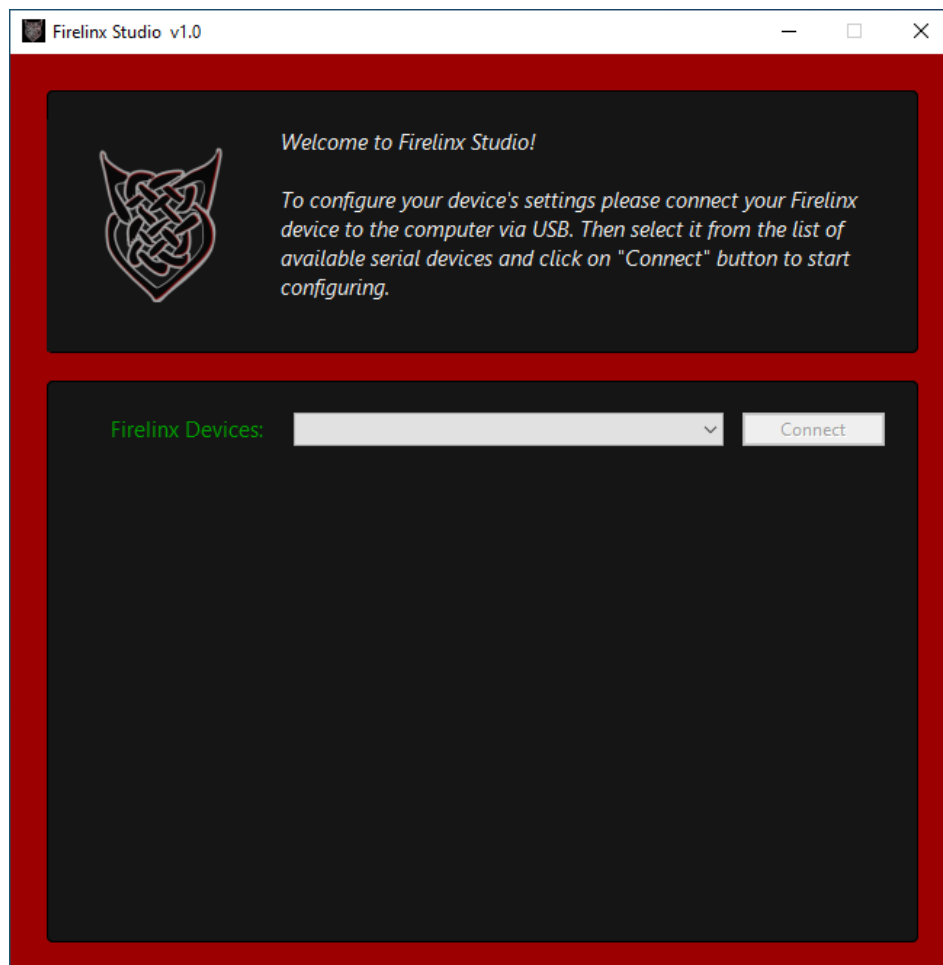
Please make sure to read this manual carefully and thoroughly before using Firelinx to ensure its safe and proper use.

**NOTICE** – This equipment generates, uses, and can radiate radio frequency energy and, if not installed and used in accordance with the instructions in this manual may cause harmful interference to radio and television reception.

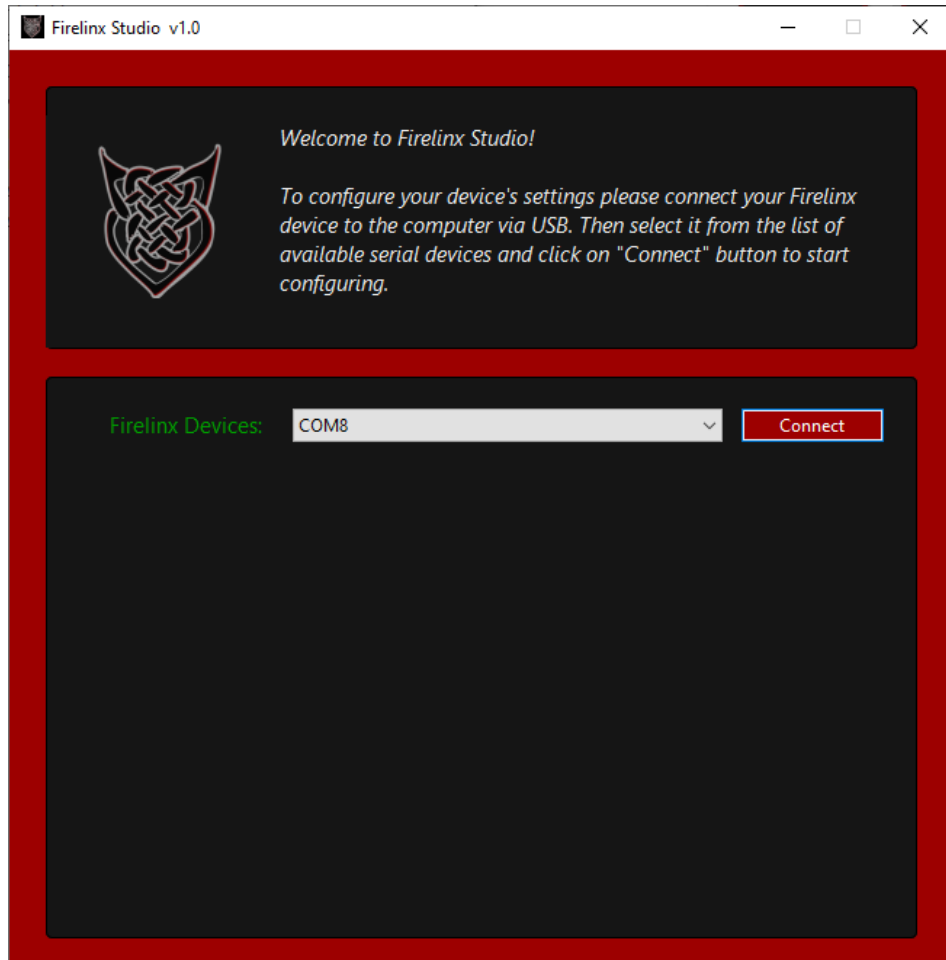
# Firelinx Studio User Guide

1. Download the Firelinx Studio software from our Shop at FIRELINX.com.
2. Install and run Firelinx Studio.
3. The application opens with the “*Firelinx Studio*” screen as shown below.

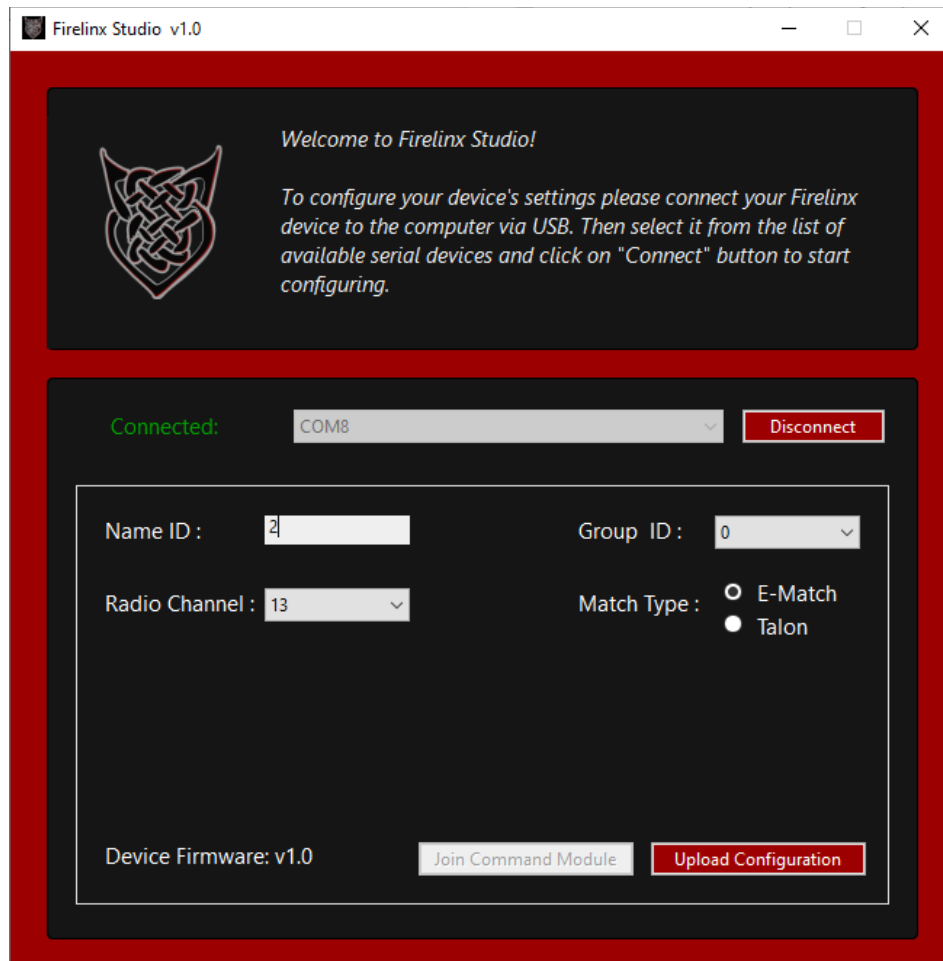
**NOTICE** – Following this instruction manual from beginning to end will demonstrate setting up the Double-Shot.



4. Plug in the Double-Shot to the computer's USB port.
5. The *"Firelinx Devices"* list in Firelinx Studio shows the name of the USB port where the Double-Shot is plugged in.
6. The *"Connect"* button becomes enabled when Firelinx Studio recognizes the Double-Shot and is ready to connect.
7. Click the *"Connect"* button to change or view the configuration settings for the Double-Shot.

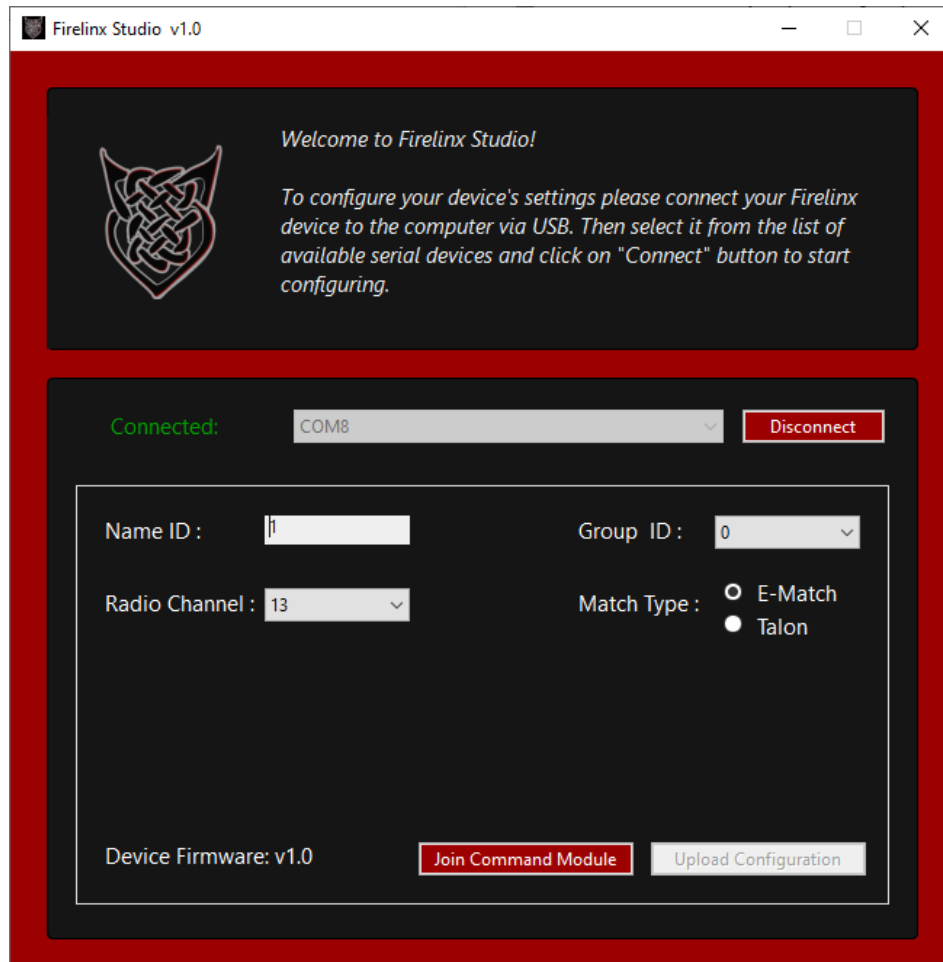


8. After you click **“Connect”** Firelinx Studio displays the settings that are currently stored in the Double-Shot.
9. Firelinx Studio show **“Connected:”** near the **“Firelinx Devices”** list when the Double-Shot successfully connects.
10. Firelinx Studio allows you to view and change the configuration settings:
  - a. **Name ID**
    - i. Each Firing Module must be assigned a unique Name ID number from 1 to 999.
    - ii. The Command Module uses this unique number to identify and communicate with each of the Firing Modules that are Joined to the Command Module.
  - b. **Group ID**
    - i. This firing mode allows Firing Modules to be grouped into distinct firing groups, up to 63 groups at a time. When you fire a channel within a group, ALL the Firing Modules assigned to that group will fire the channel.
    - ii. The default value “0” (zero) indicates that Group Firing is disabled on the Double-Shot.
    - iii. Any value for Group ID other than “0” (zero) enables Group Fire mode and assigns the Double-Shot to the group indicated by the Group ID number.
    - iv. Refer to the manual for the Command Module for more in-depth instructions to correctly use Group Fire features.
    - v. The default value “0” (zero) indicates that Group Firing is disabled on the Double-Shot.
  - c. **Radio Channel**
    - i. Set this to match the Command Module radio channel number from 1 to 14.
    - ii. The default value is 4.
    - iii. ***IMPORTANT: Must be the same as the Command Module radio channel***
  - d. **Match Type**
    - i. Set this to the type of match to be used when firing the Double-Shot.
    - ii. The default value is **“E-Match”**.
    - iii. When set to **“Talon”** the Double-Shot firing pulse duration will be longer than “E-Match” setting.
11. If any settings are changed, the **“Upload Configuration”** button becomes enabled and must be pressed to save the configuration settings to the Double-Shot.



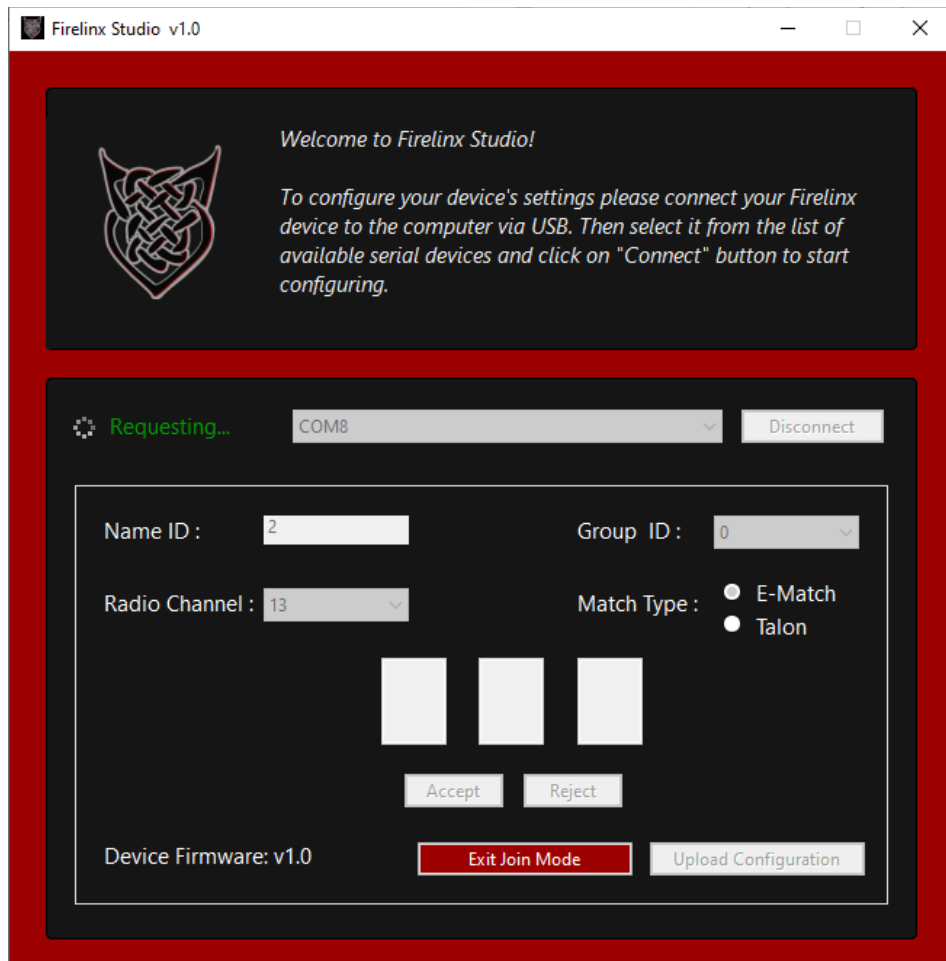
**NOTICE** – The settings shown are examples only. The values used for your settings may be different.

**NOTICE** – If any settings are changed, the “*Upload Configuration*” button becomes enabled and must be pressed to save the configuration settings to the Double-Shot!



**NOTICE** – The Command Module and Double-Shot must use the same radio channel.

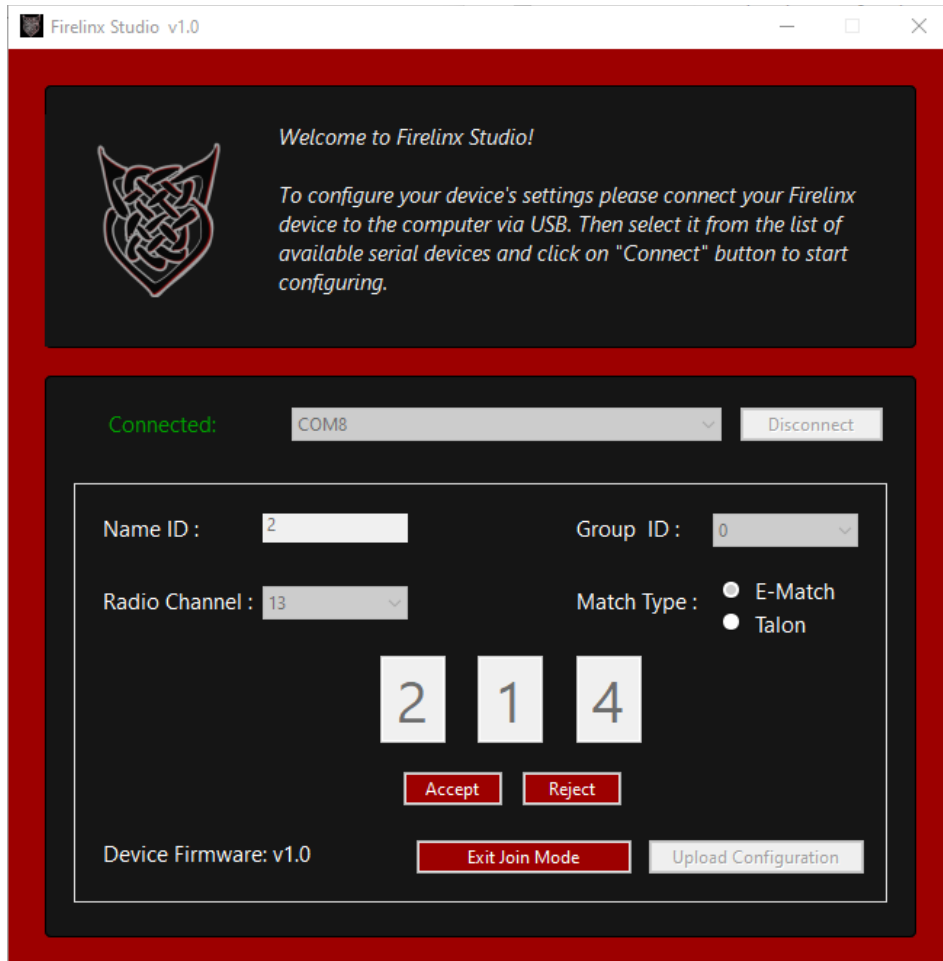
12. The Double-Shot must be joined with a Command Module so that the two modules can communicate.
13. Once the configuration settings are uploaded, the Double-Shot is ready to join to a Command Module.
  - a. The **“Join Command Module”** button is enabled when the Double-Shot is ready to join a Command Module
  - a. The **“Join Command Module”** button is disabled when any setting is changed. Upload the settings to the Double-Shot by clicking the **“Upload Configuration”** button.
14. To join Double-Shot to a Command Module, **ensure that both the Command Module and the Double-Shot are on the same radio channel** then activate Join mode on the Command Module:
  - a. Press Menu on the Command Module
  - b. Press #3 on the Numpad (10-Key Number Pad) on the Command Module
  - c. Press Enter on the Command Module
  - d. The Command Module will show a 3-digit code on its screen.



15. Next, in Firelinx Studio, click the **“Join Command Module”** button to put the Double-Shot into Join mode.
  - a. The Double-Shot will blink green LEDs at a faster rate to show that it’s in Join mode
  - b. Three white boxes for displaying the **“Join Code”** are displayed in Firelinx Studio
  - c. The progress wheel and **“Requesting...”** are displayed in green near the **“Firelinx Devices”** list while the Double-Shot broadcasts Join Requests via its built-in radio for a Command Module
  - d. While in Join mode:
    - i. The **“Disconnect”** button is disabled
    - ii. The **“Exit Join Mode”** button is enabled

**NOTICE** – Changing double-shot configuration settings is not allowed while the Double-Shot is in Join mode. To change settings, exit Join mode by clicking the **“Exit Join Mode”** button highlighted in red.

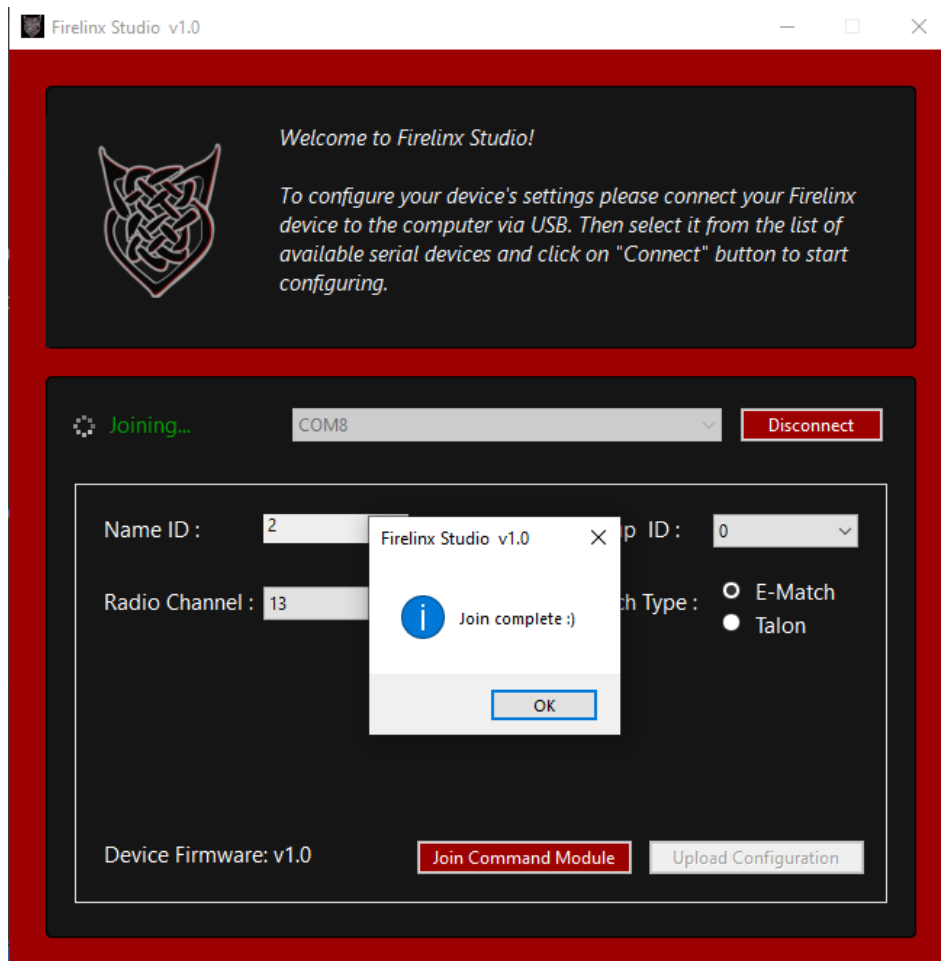




*Join code "214" is for example only. The Join code displayed should match the Command Module Join Code.*

**NOTICE** – Make sure the Join Code matches the Join Code on the Command Module

16. The Command Module's Join Code will be displayed on the screen after the Double-Shot receives the Join Code from the Command Module.
  - a. Make sure the Command Module Join Code and the Firelinx Studio Join Code are identical.



17. You can either accept the Join code, reject the Join Code, or cancel the attempt to join the Command Module.
  - a. Click the **“Accept”** button to complete the Join process. The Double-Shot will automatically exit Join mode after successfully joining with the Command Module.
    - i. Firelinx Studio displays the **“Join Complete”** popup window to confirm the Join was successful.
  - b. Click the **“Reject”** button and a different Join Code on the same radio channel may be shown if it exists. This can happen if you are using multiple Command Modules at the same time.
  - c. Click the **“Exit Join Mode”** button to cancel Join mode.
18. Click the **“Disconnect”** button to close the Double-Shot USB serial connection with Firelinx Studio
19. Exit the app.

# Troubleshooting

If you are presented with the following message while trying to configure the Double-Shot, it is possible that the internal radio module has malfunctioned. Follow these steps to try and recover:

1. Power off the Double-Shot using the power switch
2. Unplug the USB cable
3. Close the Firelinx Studio app
4. Remove the 9V battery
5. Reinstall the 9V battery. Reconnect the USB cable and power on your Double-Shot. If this does not correct the issue, please contact us at [firelinx.com](https://firelinx.com) for assistance.

